

FOR SALE - 35,493 ± SQ. FT. INDUSTRIAL/HEADQUARTERS PROPERTY



205 S NEWMAN ST

HACKENSACK, NJ 07601

Eric Lewin

Office (201) 438-1177 x107

Mobile (201) 832-4569

elewin@teamresourcesinc.com

Stacey Wellins

Office (201) 438-1177 x116

Mobile (914) 907-4095

swellins@teamresourcesinc.com



205 S NEWMAN ST // HACKENSACK, NJ 07601

Team Resources is pleased to present this exceptional opportunity to acquire a well-located industrial headquarters facility in the heart of Hackensack, New Jersey consisting of 35,493 +/- sq. ft. on a 1.57-acre lot. **205 South Newman Street** offers a functional industrial building with a modern office buildout, heavy power, abundant parking and excellent access to major highways, airports and regional transportation.



CONTACT BROKERS:

Eric Lewin

Office (201) 438-1177 x107

Mobile (201) 832-4569

elewin@teamresourcesinc.com

Stacey Wellins

Office (201) 438-1177 x116

Mobile (914) 907-4095

swellins@teamresourcesinc.com

Property Description

Building Size:	35,493 ±sq. ft.
Acreage:	1.57 acres
Office Space:	8,000 ±sq. ft.
Ceiling Height:	14' clear
Loading Doors:	4 tailboard doors
Parking:	70 surface spaces/ 10 trailers
Sprinklers:	dry
Power:	3,700 amps (120-208v/3 phase 4w Heavy)
Zoning:	M-2 (Industrial)
Sale Price:	Upon request
Taxes:	\$187,463.36 (2025)

Location Advantages

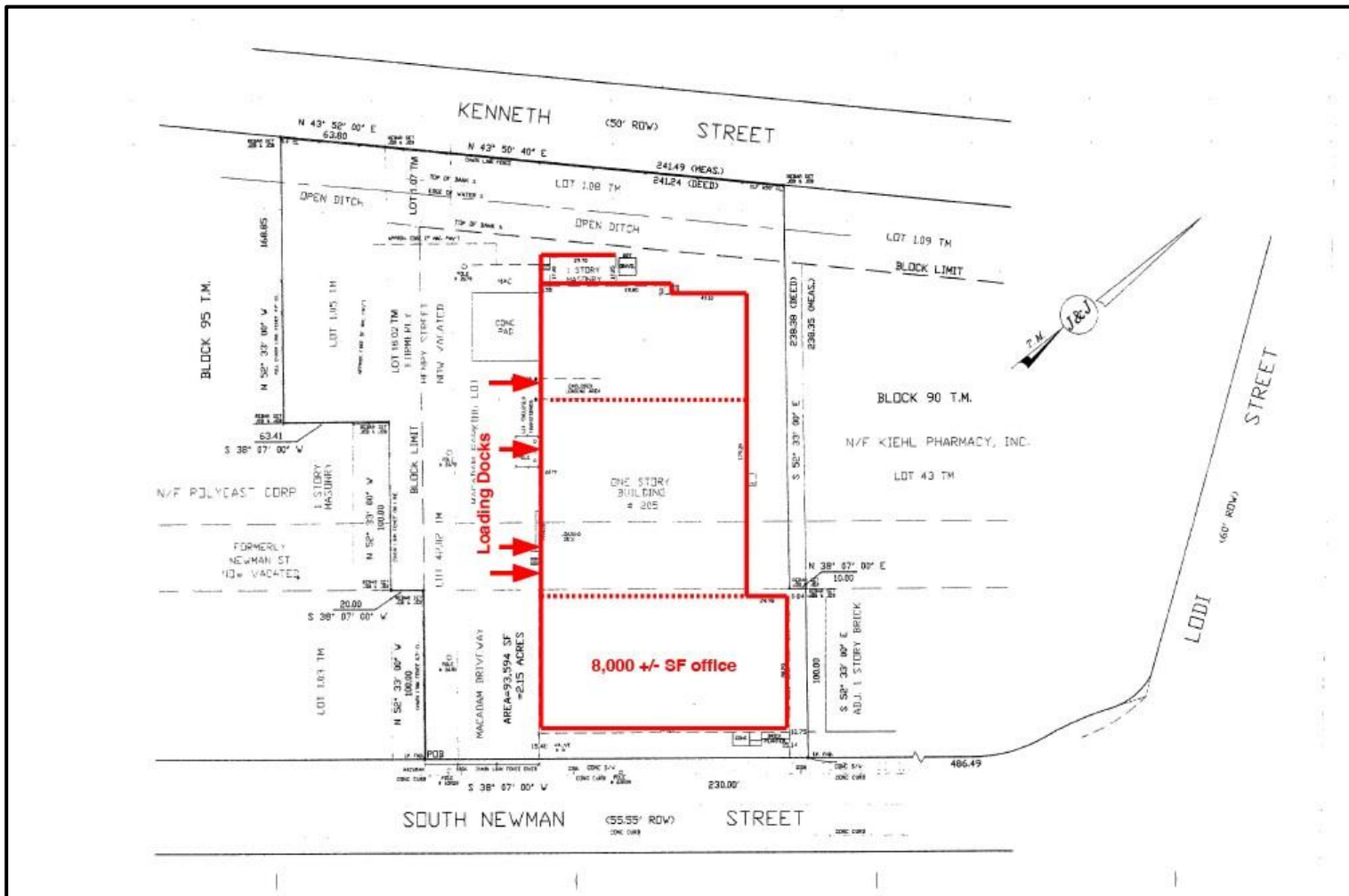
Just minutes to the following:

- I-95
- Routes 4, 46 & I-95 (NJ TPKE)
- Teterboro Airport: 3+/- minutes
- Newark Liberty Int'l Airport: 21+/- minutes
- LaGuardia Airport: 30+/- minutes
- JFK Airport: 41+/- minutes
- Essex Street Commuter Rail: 12+/- minute walk

This location provides seamless connectivity throughout New Jersey and the greater New York metropolitan area—ideal for regional distribution and corporate headquarters alike.



205 S NEWMAN ST // HACKENSACK, NJ 07601



CONTACT BROKERS:

Eric Lewin

Office (201) 438-1177 x107

Mobile (201) 832-4569

elewin@teamresourcesinc.com

Stacey Wellins

Office (201) 438-1177 x116

Mobile (914) 907-4095

swellins@teamresourcesinc.com



205 S NEWMAN ST // HACKENSACK, NJ 07601

Ideal for owner-users, investors, contractors, logistics companies, warehousing, light manufacturing, and service-related businesses. The property is situated within Hackensack's established industrial district, an area experiencing continued demand due to its proximity to major transportation infrastructure and one of the nation's largest consumer populations.



CONTACT BROKERS:

Eric Lewin

Office (201) 438-1177 x107

Mobile (201) 832-4569

elewin@teamresourcesinc.com

Stacey Wellins

Office (201) 438-1177 x116

Mobile (914) 907-4095

swellins@teamresourcesinc.com



PROPERTY PHOTOS



INTERIOR PHOTOS

