

AVAILABLE

RT. 280 - Exit 10

55 S JEFFERSON ST ORANGE, NJ



27,000 +/- SQ FT. INDUSTRIAL PROPERTY

CONTACT EXCLUSIVE BROKER

Jason Levy

Mobile (201) 665 - 2702

jlevy@teamresourcesinc.com

Jeff Fulton

Mobile: (201) 362 - 1015

jfulton@teamresourcesinc.com



55 S. JEFFERSON ST // ORANGE , NJ

Team Resources, as exclusive agent, is pleased to present this industrial property of 27,000 +/- Sq. Ft. for lease with possible sale. Zoned: MX-3 (Mixed-Use High Density Residential and Regional Commercial Zone. (Industrial/Retail/Residential High Rise 15 Floors)



PROXIMITY TO KEY LOCATIONS

NJ Turnpike 16 +/- miles Holland Tunnel 13 +/- miles
 Port Newark 12 +/- miles Lincoln Tunnel 17 +/- miles

CONTACT EXCLUSIVE BROKER

Jason Levy

Mobile (201) 665 - 2702

jlevy@teamresourcesinc.com

Jeff Fulton

Mobile: (201) 362 - 1015

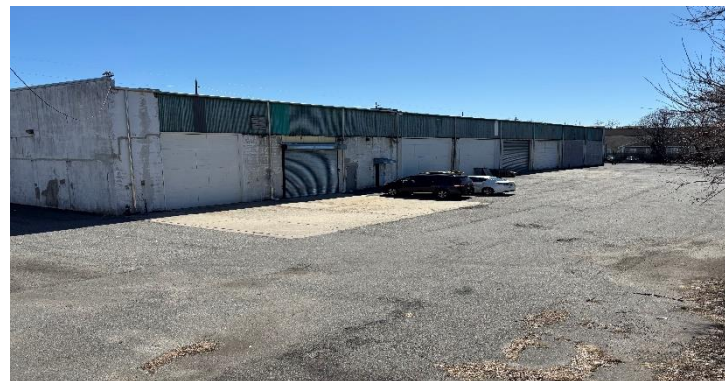
jfulton@teamresourcesinc.com

Property Description

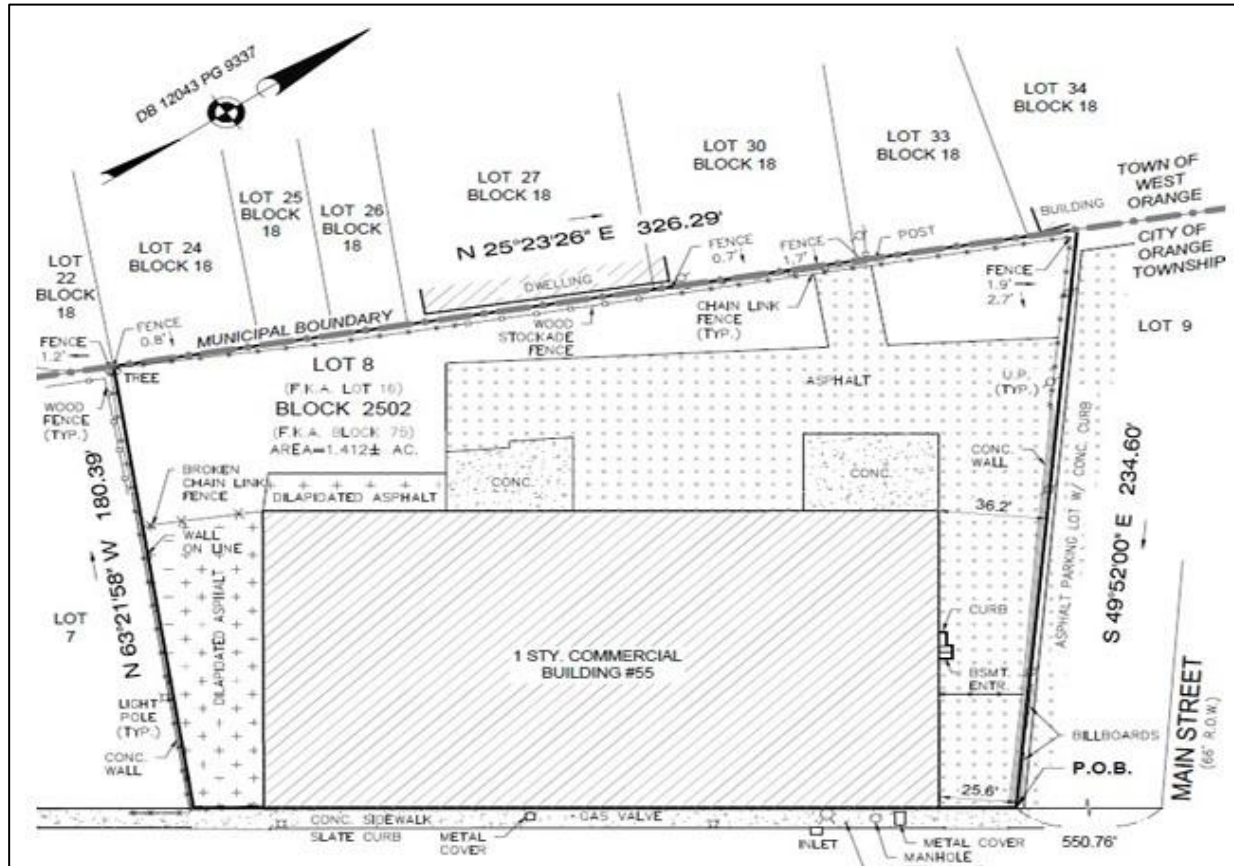
Available Space:	27,000 +/- sq. ft.
Acreage:	1.39 acres
Office Space:	2,000 +/- sq. ft.
Ceiling Height:	20' clear
Loading Doors:	2 interior loading doors /1 drive-in
Parking:	abundant car & truck parking
Sprinklers:	wet
Power:	800 amps
Lease Price:	\$10.00/sq. ft. (\$7.50 net 1st year)
Taxes & Insurance:	\$4.93/sq. ft.
Occupancy:	60 – 90 days

Overview

This industrial building has a large parking lot and falls within the MX-3 Zone, which allows for a variety of uses, including Industrial / Retail as well as Residential High Rise to 15 Floors. **An additional highlight of the property is the large lot in back suitable for outside storage space.** Owner will consider sale.



55 S. JEFFERSON ST // ORANGE, NJ



CONTACT EXCLUSIVE BROKER

Jason Levy

Mobile (201) 665 - 2702

jlevy@teamresourcesinc.com

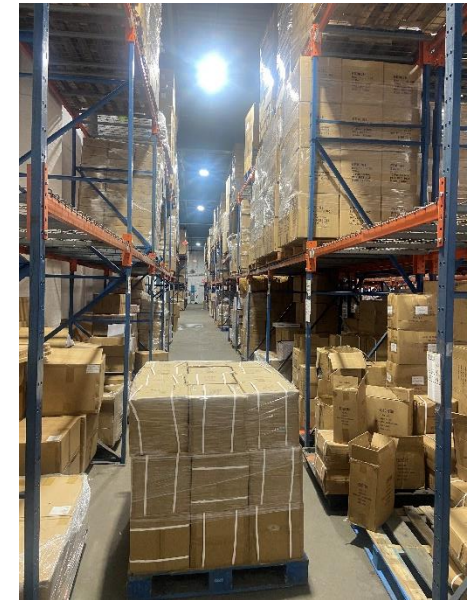
Jeff Fulton

Mobile: (201) 362 - 1015

jfulton@teamresourcesinc.com



55 S. JEFFERSON ST // ORANGE , NJ



CONTACT EXCLUSIVE BROKER

Jason Levy

Mobile (201) 665 - 2702

jlevy@teamresourcesinc.com

Jeff Fulton

Mobile: (201) 362 - 1015

jfulton@teamresourcesinc.com

