

FOR LEASE

370 NORTH ST.

TETERBORO, NJ



8,035 ± SQ FT. FLEX PROPERTY

**CONTACT EXCLUSIVE BROKER**

**ALEX ROSENBERG**

Mobile (551) 427-8835

[arosenberg@teamresourcesinc.com](mailto:arosenberg@teamresourcesinc.com)

**DAVID CANTOR**

Mobile: (201) 314-2495

[dcantor@teamresourcesinc.com](mailto:dcantor@teamresourcesinc.com)





**370 North Street** // TETERBORO, NJ**PROXIMITY TO KEY LOCATIONS**

GW Bridge: 6 +/- miles      Ports: 16 +/- miles  
 NJ Turnpike: 12 +/- miles      Lincoln Tunnel: 14 +/- miles

**CONTACT EXCLUSIVE BROKER****ALEX ROSENBERG**

Mobile (551) 427-8835

arosenberg@teamresourcesinc.com

**DAVID CANTOR**

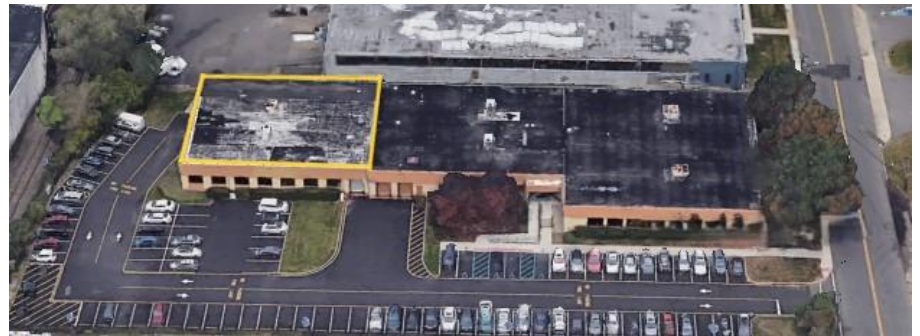
Mobile: (201) 314-2495

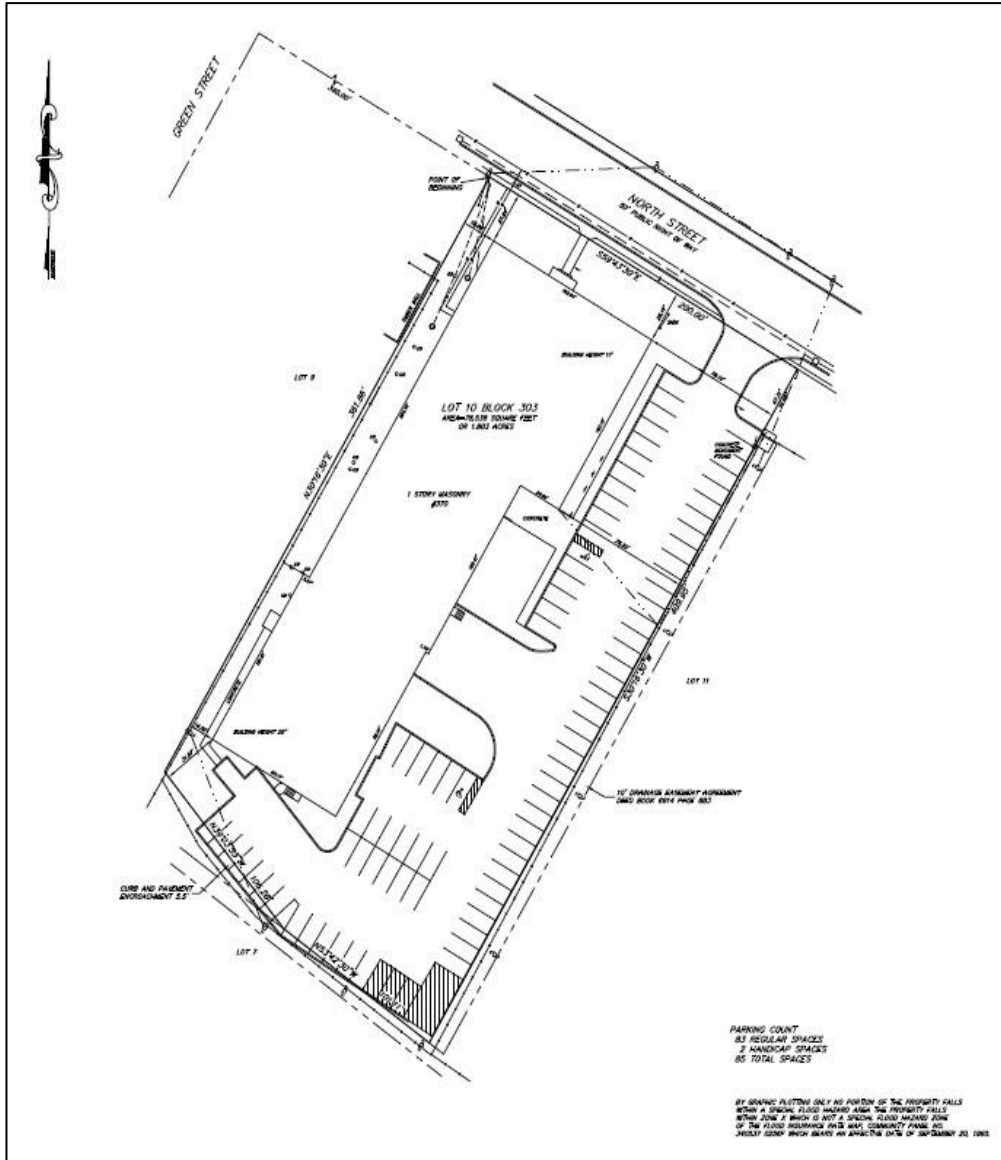
dcantor@teamresourcesinc.com

**Property Description**

<b>Available:</b>	8,035 +/- sq. ft.
<b>Building Size:</b>	27,185 +/- sq. ft.
<b>Ceiling Height:</b>	14'
<b>Loading:</b>	1 tailboard door
<b>Parking:</b>	15 + spaces
<b>Asking Rental:</b>	Upon request
<b>Tax/CAM:</b>	\$4.89 / sq. ft.
<b>Zoned:</b>	Light Industrial & Distribution
<b>Occupancy:</b>	60 days from lease signing

**Overview:** We're pleased to offer this 8,035 s.f. unit on a 1.83 lot in the heart of the Meadowlands in Bergen County, NJ. The property is located in the Light Industrial & Distribution zone. With Routes 17, 46, I-80 at your doorstep, this convenient location is ideally situated for conducting your business.





**CONTACT EXCLUSIVE BROKER**

**ALEX ROSENBERG**

Mobile (551) 427-8835

arosenberg@teamresourcesinc.com

**DAVID CANTOR**

Mobile: (201) 314-2495

dcantor@teamresourcesinc.com

