

FOR SUB-LEASE

8 FERNWOOD ROAD

FLORHAM PARK, NJ



68,066 ± SQ FT. INDUSTRIAL WAREHOUSE UNIT (DIVISIBLE)

CONTACT EXCLUSIVE BROKER

JASON LEVY

Mobile: (201) 665-2702

jlevy@teamresourcesinc.com

JEFF FULTON

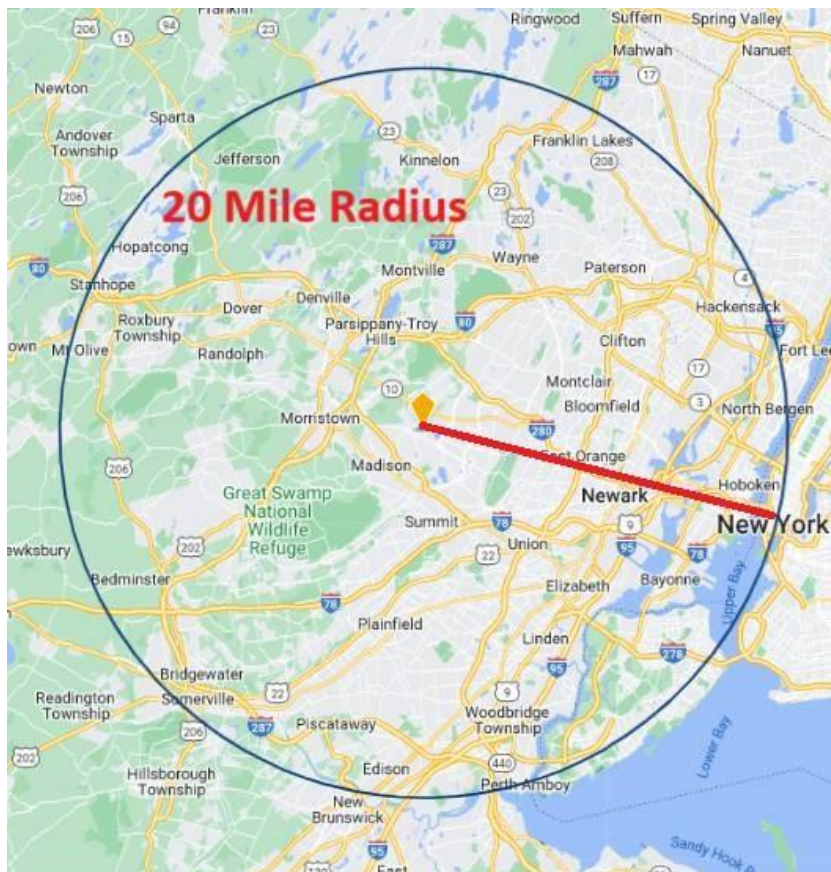
Mobile: (201) 362-1015

jfulton@teamresourcesinc.com



8 FERNWOOD ROAD // FLORHAM PARK, NJ

Team Resources, as exclusive agent, is pleased to present this 68,066 +/- sf industrial warehouse unit for sub-lease through 05/6/2027. Ideal for warehouse/distribution & manufacturing & conveniently located near major highways.

**CONTACT EXCLUSIVE BROKER****JASON LEVY**

Mobile: (201) 665-2702

jlevy@teamresourcesinc.com

JEFF FULTON

Mobile: (201) 362-1015

jfulton@teamresourcesinc.com



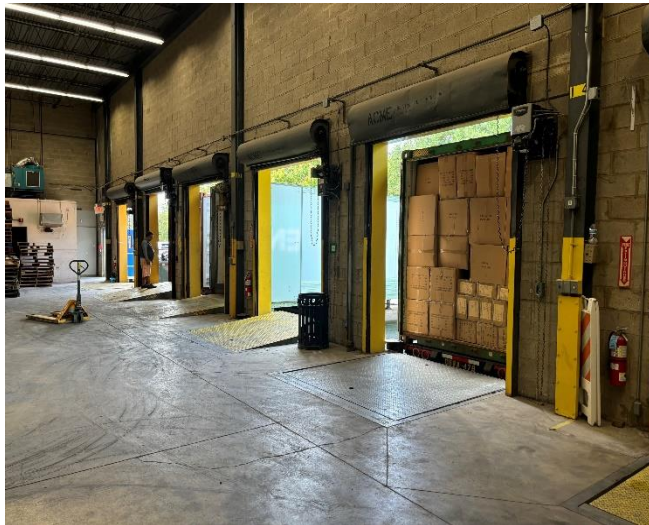
All information furnished is from sources deemed reliable; however we have not verified it and it is submitted subject to errors, omissions, change of price, prior sale or lease, or withdrawal without any notice. No representation is made as to zoning, physical condition, fire sprinkler adequacy or environmental status of any property and prospective purchasers/tenants are urged to conduct whatever independent investigation they, their attorneys and advisors deem necessary to confirm that a property is suitable for the intended use. Any commissions due cooperating brokers are subject to all terms and conditions upon which we and our clients have agreed.

Property Description

Building Size:	171,460+/- sq. ft.
Available:	68,066 +/- sq. ft. (Divisible)
Office Space:	5,000 +/- sq. ft.
Ceiling Height:	25' clear
Power:	4000 amps
Loading:	6 tailboard doors / 1 drive-in
Parking:	Ample
Column Span:	40' x 40'
Asking Rental:	\$17.00 NNN
Tax & CAM:	\$2.99 psf
Sub-Lease Term:	Through May 31, 2027
Occupancy:	December 1, 2024

Open link below to view property video:

[8 Fernwood Property Video](#)



CONTACT EXCLUSIVE BROKER

JASON LEVY

Mobile: (201) 665-2702

jlevy@teamresourcesinc.com

JEFF FULTON

Mobile: (201) 362-1015

jfulton@teamresourcesinc.com

