

FOR LEASE

210 S. VAN BRUNT ST. ENGLEWOOD, NJ

15,900 ± SQ FT. WAREHOUSE / DISTRIBUTION FACILITY

CONTACT EXCLUSIVE BROKER

ERIC LEWIN

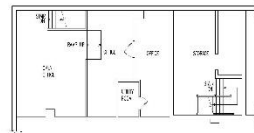
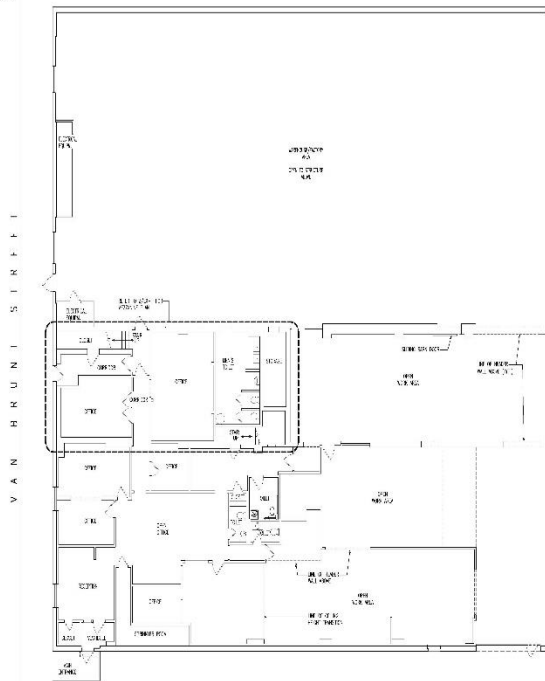
Mobile (201) 832-4569

elewin@teamresourcesinc.com



210 S. VAN BRUNT ST // ENGLEWOOD, NJ

Team Resources, as exclusive agent, is pleased to present this 15,900 +/- sf industrial property for lease, with sale possible. Zoned RIM (Research, Industrial & Medical).



2 EXISTING 1ST MEZZ FLOOR PLAN
1/24/2018 - 1/24/2018

1 GROUND FLOOR EXISTING PLAN
1/24/2018 - 1/24/2018

Property Description

Available	15,900 +/- sq. ft.
Office Space:	2,385 +/- sq. ft.
Ceiling Height:	13' clear
Power:	120/208v 800 amp 3 phase 277/480v 400 amp 3 phase
Loading:	1 (12' x 12') Drive-in Door
Parking:	12 car off-street parking
Asking Rental:	\$15.95 NNN (Will consider sale)
Taxes / CAM:	Approx. \$2.04 / \$1.00 per sq. ft.
Occupancy:	Immediate

Overview: This property is equipped with air-conditioning, is fully sprinklered and zoned in the Research, Industry & Medical sector. Ideal for warehouse, distribution and flex uses. Convenient and quick access to Routes 4, I-95 and I-80. Just moments away from the GW Bridge. Owner will consider sale.

ERIC LEWIN

Mobile (201) 832-4569

elewin@teamresourcesinc.com





ERIC LEWIN

Mobile (201) 832-4569

elewin@teamresourcesinc.com

