

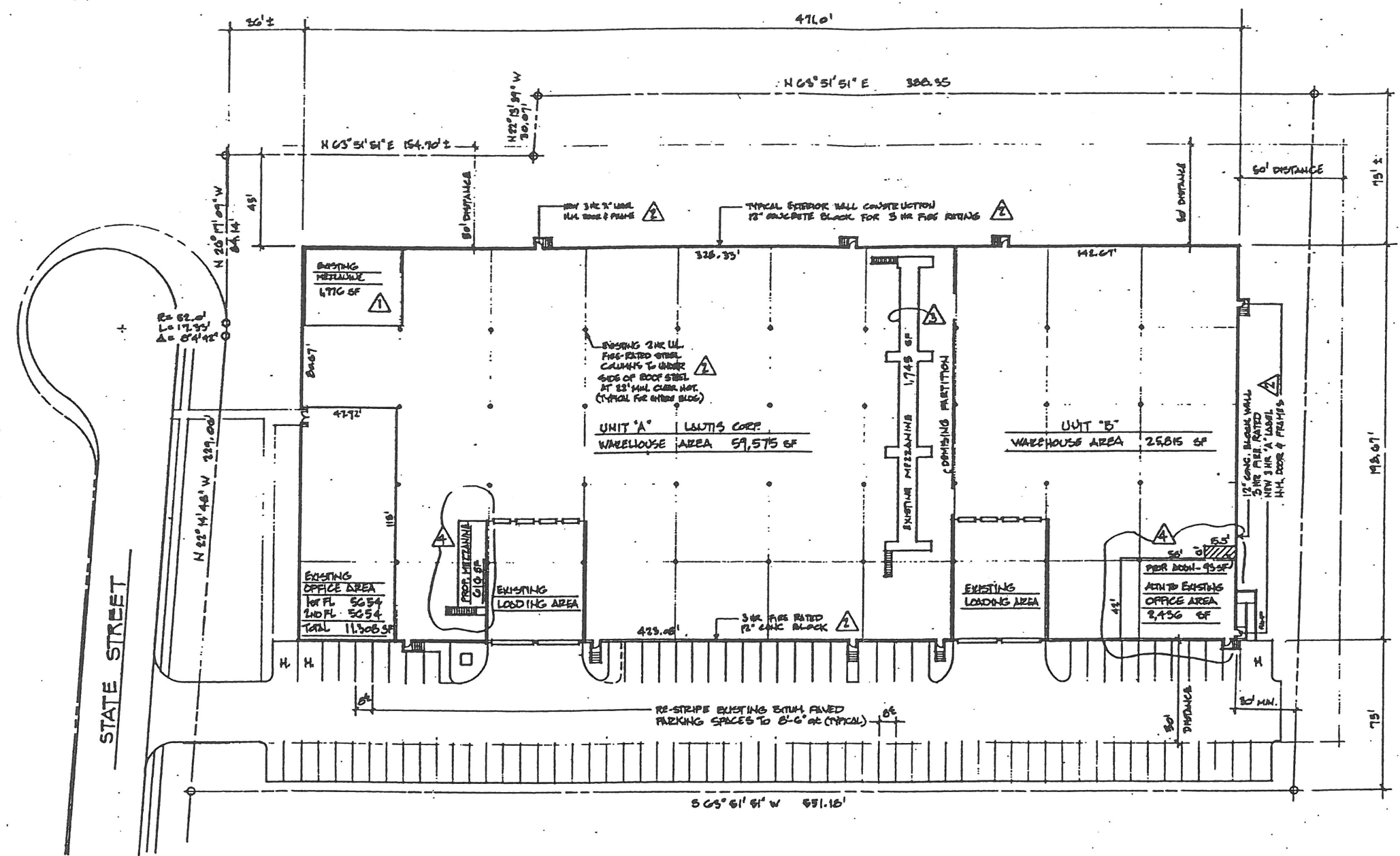
**INFORMATION**

PROPERTY: BLOCK 61 LOTS 10, 12  
 ZONE: LIGHT INDUSTRIAL AND DISTRIBUTION  
 PROPERTY AREA: 4.30 AC 187,302 SF  
 BUILDING: BROWN BRICK 73,574 SF  
 EXISTING: 5,654 SF  
 SECOND FLOOR AREA: 5,654 SF  
 EXISTING: 99,228 SF  
 TOTAL FLOOR AREA: 13,744 SF  
 FINISHED OFFICE AREA: 13,744 SF  
 BUILDING HEIGHT: 43' (CLEAR MIN.)  
 LOADING DOCKS: ( ) INTERIOR ( ) EXTERIOR  
 BUILDING VOLUME: ( )  
 PROPOSED EXISTED DOCK CONSTRUCTION TYPE: 20 UNLIMITED AREA

	REQUIRED	PROPOSED
CAR PARKING	94	97
SETBACKS		
FRONT	35' FT	35' FT
REAR	30' FT	30' FT
SIDE (MIN.)	20' FT	45/75' FT
SIDES (BOTH)	FT	FT
COVERAGE (BOX PARK)		85%
OPEN SPACE (10% MIN)		X

**PARKING ALLOCATION**

AREA	UNIT 'A'	UNIT 'B'	TOTAL BY USE
1st FL OFFICE	5,654 SF	2,529 SF	8,183 SF
2nd FL OFFICE	5,654 SF	-	5,654 SF
WAREHOUSE	11,308 SF	2,529 SF	13,837 SF
WARE METZ	28,27 SF	6,32 SF	34,59 SF
WAREHOUSE	4,197 SF	-	4,197 SF
WAREHOUSE	59,575 SF	25,815 SF	85,390 SF
WAREHOUSE	68,712 SF	25,815 SF	94,527 SF
WAREHOUSE	42,87 SF	17,21 SF	60,08 SF
<b>TOTAL CARS</b>	<b>70.74</b>	<b>23.53</b>	<b>94.27 SF</b>



ADDED PROP. METZANINE ALONG LOADING AREA WALL	10/24/93
ADDED PROP. METZANINE ALONG DEMISING PARTITION	10/24/93
REGULATORY CATCH UP BOCA COVER TYPE TO 20 UNLIMITED AREA	7/11/93
ADDED PROP. METZANINE - REVISED PARKING ALLOCATIONS	01/31/93

PROJECT: **OFFICE ALTERATIONS**

FOR: **THE LANTIS CORPORATION**

LOCATION: 10 STATE STREET  
 MOONACHE, NJ 07074  
 BLOCK 61 - LOTS 10, 12

CALL NORTH

**EDWARD R. ACKER, AIA**  
 ARCHITECT

240 GRAND AVENUE  
 LEONIA, N.J. 07605  
 201 944-3464

N.J. LIC. A1 06412  
 N.Y. LIC. 011017-1

DATE: 6/3/93

SCALE: 1" = 30'

DRAWN BY: ERA

DATE: 6/3/93

**SITE PLAN  
 PARKING LAYOUT**

**SP-1**