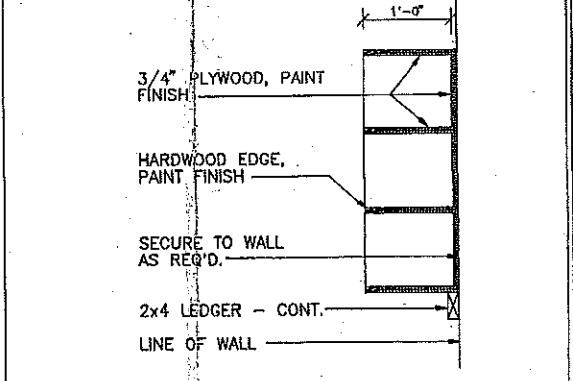


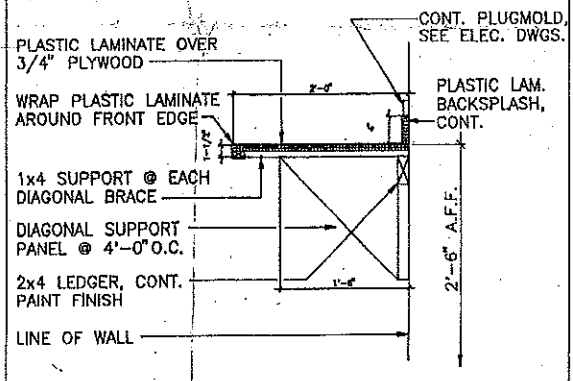
A6 ELEVATION @ MAIL SLOT

3/4"



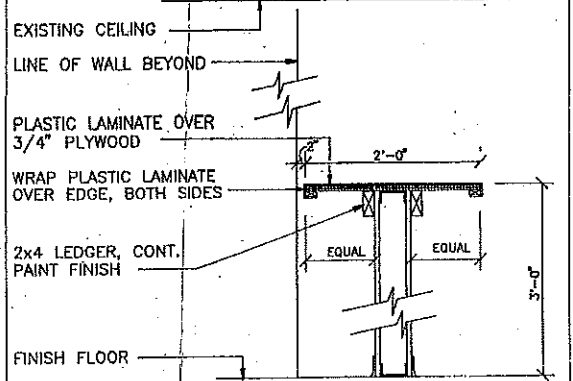
B6 SECTION @ MAIL SLOT

3/4"



C6 SECTION @ TECH COUNTERTOP

1"



D6 SECTION @ RECEIVING COUNTER

1"

D1 FLOOR PLAN

1/8"

W S A
ARCHITECTURE • DEVELOPMENT

A PROFESSIONAL CORPORATION

PRINCETON OFFICE:
195 NASSAU ST.
PRINCETON, NJ 08542
(609) 921-1687 FAX: 921-8528

CHARLOTTESVILLE OFFICE:
619 EAST HIGH ST.
CHARLOTTESVILLE, VA 22902
(804) 971-2920 FAX: 971-7048

IN ALLIANCE WITH

Bell Atlantic

BELL ATLANTIC NETWORK SERVICES, INC.
2880 FAIRVIEW PARK DRIVE
FALLS CHURCH, VA. 22042

CALLS TO THE WSA TEAM SHOULD BE DIRECTED TO WSA OFFICE IN CHARLOTTESVILLE, VIRGINIA.

CALLS ON PROJECT SPECIFIC WORK SHOULD BE DIRECTED TO THE LEAD TEAM MEMBER INDICATED BELOW.

LEAD TEAM CONTACT:

HUGH ROSE
PRINCETON OFFICE

PROFESSIONAL SEAL:

THIS DRAWING SHALL NOT BE USED FOR CONSTRUCTION UNLESS A PROFESSIONAL'S SEAL AND SIGNATURE ARE ON THE DRAWING

PROJECT TITLE / DESCRIPTION:
BACCSI WORK CENTER

FACILITY LOCATION:
70 BURLEWS COURT
HACKENSACK, NJ

GLC NO.:

BELL ATLANTIC PROJECT NO.:

DATE: 15 SEPTEMBER 1995

NO.	REVISION:	DATE:
	BID SET	9/12/95
	AS-BUILT	11/20/95

© 1995 WSA ARCHITECTURE • DEVELOPMENT, P. C.

WSA PROJECT NO:
95S029

SHEET NUMBER:
AS-BUILT
ASB101
REFERENCE

SHEET 1 OF 1

PR. SG: 1/8" WSA C FILE: G:\BELL\95S029\ASB101