

ACRES TOTAL 10.27 04

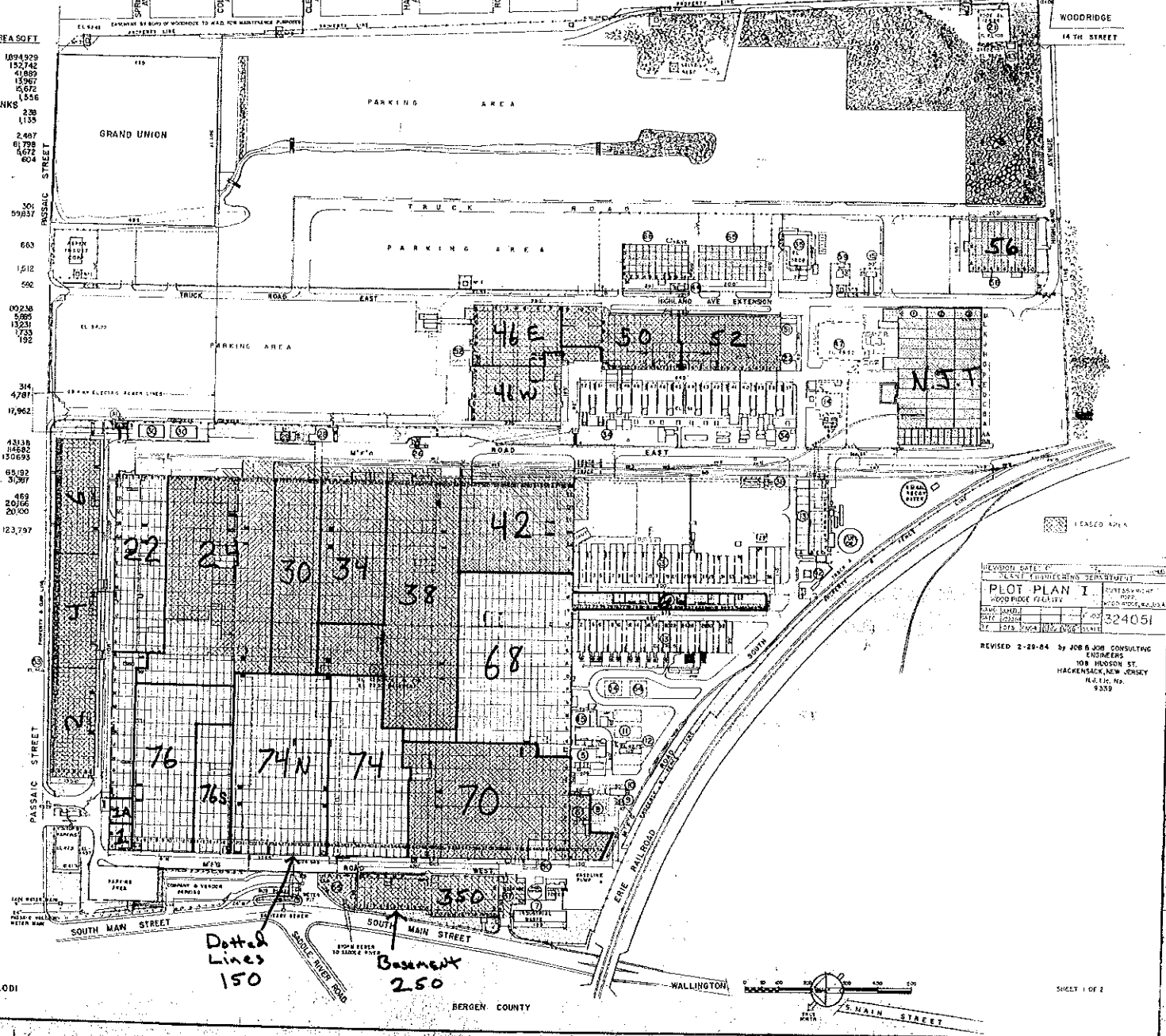
HASBROUCK HEIGHTS

ELEVATIONS SHOWN (EL) ARE TAKEN AT FIN. FLOOR EXCEPT AS OTHERWISE NOTED

LEGEND

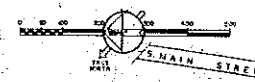
AREA SQ FT

- 2 MAIN MFG B ASSEMBLY BLDG. 1094929
- 3 TEST CELLS 30'-0"
- 4 SERVICE BLDG - PRODUCTION TEST 152742
- 5 FUEL METERING LAB. 41809
- 6 OIL HANDLING & STORAGE 13967
- 7 INDUSTRIAL WASTE PLANT 15672
- 8 OIL PUMP HOUSE 1556
- 9 PD 600K RECLAIM PLANT 238
- 10 GASOLINE STORAGE TANK 1135
- 11 GASOLINE STORAGE TANK 2407
- 12 DOLLER HOUSE 61798
- 14 TEST RDS BLDG. 5672
- 15 STYRENE STORAGE BLDG. 624
- 21 WELL WATER RESERVOIR 301
- 22 POWER SYST. ASSEMBLY & ENGR'G 59837
- 23
- 24
- 25
- 26 PLATFORM SCALE AND HOUSE 663
- 27
- 28 EAST TUNNEL ENTRANCE
- 29 AMMONIA STORAGE BLDG. 15112
- 30 MASTER SUB-STATION SWITCHYARD
- 31 MASTER SUB-STATION CONTROL 526
- 32
- 33
- 34 TEST CELLS 30'-0"
- 35 FUEL METERING BLDG. 00236
- 36 STORAGE SHED 5895
- 37 13231
- 38 PROPANE STORAGE TANK HOUSE 1733
- 39
- 40
- 41
- 42 WASTE A/O NEUT. PH
- 43 RESERVOIR VALVE HOUSE 4781
- 44 WELL WATER BOOSTER PUMP HOUSE
- 45 FUEL D/FCT. TEST LAB
- 46
- 47 DEVELOPMENT LAB 17,962
- 48
- 49
- 50 SUB-STATION #11
- 51 POWER SYSTEMS STOR. BLDG. 48138
- 52 MANUFACTURING BLDG. 14682
- 53 OFFICE BLDG. 130693
- 54 FUEL STORAGE TANKS
- 55 MANUFACTURING BLDG. 68,032
- 56 WAREHOUSE & OFFICE-REACTOR VESS. 3,087
- 57
- 58
- 59 SECURITY DESTRUCT BLDG. 469
- 60 STORAGE BLDG. 20166
- 61 ROT. COMBUS OFFICE BLDG. 20,000
- 62
- 63
- 64
- 65
- 66
- 67
- 68 REACTOR VESSEL BLDG. 123,797



| | | | |
|---------------------------------------|--|------------------------------------|--|
| REVISION DATE: 2-29-64 | | BY: JCB & JCB CONSULTING ENGINEERS | |
| PLOT PLAN I | | PROJECT NO. 324051 | |
| WOOD RIDGE PLANT | | SHEET NO. 1 OF 2 | |
| 100 HOBSON ST. HACKENSACK, N.J. 07630 | | | |

REVISED 2-29-64 by JCB & JCB CONSULTING ENGINEERS
 100 HOBSON ST.
 HACKENSACK, NEW JERSEY
 07630



324 051

LODI

BERGEN COUNTY

SHEET 1 OF 2

Dotted Lines 150
 Basement 250